

COTSWOLD STEEL STOCKHOLDERS LTD

*For your house extensions, renovations and alterations
Busy local business working with the Building Trade*



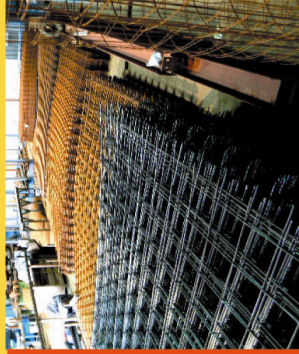
David Langdon purchased this thriving business in July having worked there for 4 years. The offices and massive warehouse conveniently located at Babdown near Tetbury, have plenty of space to house a large selection of steel beams and reinforcing mesh.

Steel beams (often referred to as RSJ'S) are frequently specified to add strength to a structure as they carry considerable weight. Cotswold Steel can cut the steel to the required length and also offer a fabrication service to satisfy bespoke requirements. Site visits are also offered where needed.

For reinforcing concrete, the company also stocks 4.8metre x 2.4 metre sheets of reinforcing fabric and 6 metre lengths of reinforcing bar which can be cut and bent to schedule on their purpose made machines.

Delivery is free within a 25 mile radius on their fleet of different sized vehicles to accommodate both large orders and those awkward locations down twisty narrow country lanes.

There are a number of friendly staff who support David. Pete is office based, handling enquiries and offering advice. Adrian and Gary operate in the warehouse and assist with deliveries and Tanya is Company Secretary. Together, they provide a range of knowledge and materials to builders in the area.



David who has lived in Wotton for 22 years is married to Tanya, a local girl whose brother Paul and father Roger Grimes, own and run Wotton Farm Shop. Tanya works there part-time and she may also be known for her welcoming smile in Wotton Travel. She and David have 2 children, Alex 8 and Joel 6 who attend Blue Coat School in Wotton.

S T R E N G T H T H R O U G H



COTSWOLD STEEL STOCKHOLDERS LTD

T:01666 504889

sales@cotswoldsteel.plus.com

Specialising in the local building market

F L E X I B I L I T Y

